

# DECLARATION OF COUNTY LINE COMMON TO WEBER COUNTY AND CACHE COUNTY, UTAH

LOCATED IN SECTION 1, TOWNSHIP 7 NORTH, RANGE 1 EAST, AND SECTIONS 4,5,&6, TOWNSHIP 7 NORTH, RANGE 2 EAST, SALT LAKE BASE AND MERIDIAN, US SURVEY, WEBER AND CACHE COUNTY, UTAH

SEPTEMBER, 2013  
SHEET 1 OF 3

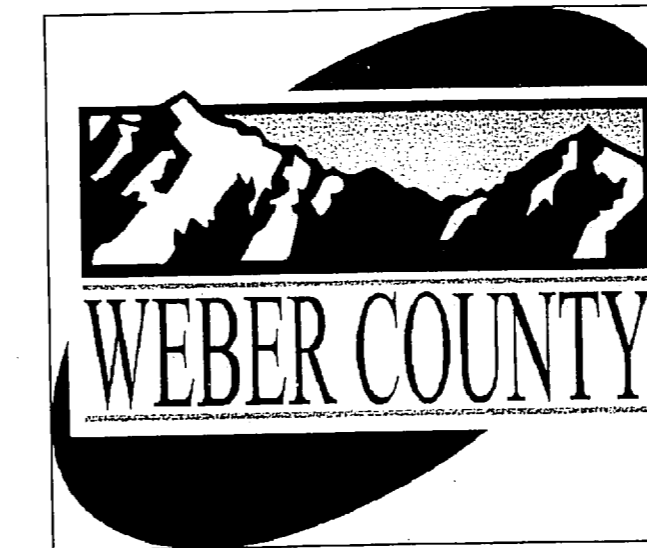
## COUNTY LINE DESCRIPTION

Part of Section 1, Township 7 North, Range 1 East, and Sections 4, 5, and 6, Township 7 North, Range 2 East, Salt Lake Base and Meridian, U.S. Survey, better described as follows:

Beginning at a brass Weber/Cache county line monument as set by the Weber County Surveyor's office on 5/01/13, said point being located N89° 56' 05"W 1380.98 feet (Nad'83 State Plane Grid bearing basis) from a 1944 GLO brass cap monument representing the Township corner common to Townships 7 North and 8 North, and Ranges 1 East and 2 East, and running thence along the following 4 courses along the officially established Weber/Cache line as per a prior Declaration recorded as entry # 1353604 (see Plat Book 40 Page 21) in the Weber County Recorder's Office:

(1) S26° 39' 34"E 457.03 feet to a Weber/Cache County brass cap monument, (2) S36° 45' 36"E 374.24 feet to a Weber/Cache County brass cap monument, (3) S66° 54' 40"E 745.76 feet to a Weber/Cache County brass cap monument, (4) S67° 48' 29"E 1214.23 feet to a Weber/Cache County brass cap monument and the terminus of the said prior declaration and the "True" point of beginning, and running thence along the following 78 courses along the Weber/Cache County line:

(1) S68° 54' 05"E 618.68 feet to a Weber/Cache County brass cap monument, (2) thence S32° 02' 40"E 1432.62 feet to a Weber/Cache County brass cap monument, (3) thence S47° 01' 52"E 1561.89 feet to a Weber/Cache County brass cap monument located in the Hidden Lakes parking lot, (4) thence S74° 17' 09"E 602.01 feet, (5) thence S84° 37' 31"E 129.79 feet, (6) thence N74° 55' 04"E 101.38 feet, (7) thence S76° 32' 11"E 92.39 feet, (8) thence S65° 19' 47"E 171.60 feet, (9) thence N89° 40' 26"E 104.68 feet, (10) N52° 55' 20"E 193.59 feet, (11) thence N69° 40' 02"E 221.91 feet, (12) thence N59° 06' 10"E 118.16 feet, (13) thence S67° 13' 34"E 69.76 feet, (14) thence N86° 54' 09"E 63.24 feet, (15) thence S86° 25' 18"E 100.69 feet, (16) thence S74° 00' 33"E 244.83 feet, (17) thence N74° 03' 32"E 521.31 feet, (18) thence N66° 25' 34"E 317.77 feet, (19) thence N70° 24' 16"E 153.33 feet, (20) thence N58° 11' 56"E 285.32 feet to a Weber/Cache County brass cap monument, (21) thence S84° 07' 41"E 53.98 feet, (22) thence S87° 03' 48"E 69.14 feet, (23) thence N81° 05' 15"E 97.39 feet, (24) thence S42° 06' 33"E 88.79 feet, (25) thence S29° 32' 50"E 90.02 feet, (26) thence S60° 57' 12"E 66.00 feet, (27) thence N89° 45' 03"E 75.89 feet, (28) thence S40° 33' 09"E 57.25 feet, (29) thence N79° 41' 06"E 72.99 feet, (30) thence N82° 58' 29"E 52.82 feet, (31) thence N72° 17' 43"E 58.58 feet, (32) thence S82° 52' 42"E 50.93 feet, (33) thence N75° 58' 36"E 120.54 feet, (34) thence S63° 46' 19"E 276.76 feet, (35) thence N82° 55' 27"E 343.76 feet, (36) thence N64° 52' 01"E 188.03 feet, (37) thence S83° 46' 54"E 176.84 feet, (38) thence S70° 03' 03"E 59.60 feet to a Weber/Cache County brass cap monument, (39) thence N73° 41' 58"E 72.74 feet, (40) N59° 12' 35"E 102.26 feet, (41) thence N25° 41' 03"E 70.59 feet, (42) thence N66° 02' 50"E 70.31 feet, (43) thence N42° 53' 59"E 128.35 feet, (44) thence N54° 47' 39"E 84.47 feet, (45) thence N49° 51' 14"E 87.14 feet, (46) thence N38° 48' 07"E 141.86 feet, (47) thence N36° 53' 00"E 116.00 feet, (48) thence N70° 56' 36"E 94.54 feet, (49) thence N52° 44' 19"E 145.13 feet, (50) thence N58° 59' 58"E 111.75 feet, (51) thence N55° 28' 01"E 198.69 feet, (52) thence N61° 38' 32"E 91.96 feet, (53) thence S87° 11' 13"E 103.70, (54) thence N80° 38' 00"E 286.77 feet, (55) thence N84° 30' 21"E 198.43 feet, (56) thence N61° 36' 04"E 92.91 feet, (57) thence N50° 21' 56"E 103.07 feet, (58) thence N27° 02' 53"E 101.09 feet, (59) thence N42° 49' 51"E 153.03 feet, (60) thence N38° 49' 02"E 262.69 feet, (61) thence N44° 43' 07"E 190.34 feet, (62) thence N81° 07' 02"E 180.14 feet, (63) thence N89° 39' 21"E 108.74 feet, (64) thence N83° 37' 38"E 170.29 feet, (65) thence S88° 30' 36"E 241.18 feet, (66) thence N89° 39' 21"E 108.74 feet, (67) thence N83° 37' 38"E 170.29 feet, (68) thence N84° 50' 59"E 215.80 feet, (69) thence S81° 51' 57"E 144.54 feet, (70) thence N73° 13' 47"E 160.54 feet, (71) thence N89° 12' 45"E 152.04 feet, (72) thence S86° 21' 07"E 125.49 feet, (73) thence N89° 56' 46"E 141.72 feet, (74) thence S84° 53' 00"E 141.65 feet, (75) thence S73° 47' 02"E 183.63 feet to a Weber/Cache County brass cap monument, (76) thence N69° 32' 50"E 218.52 feet, (77) thence N65° 51' 54"E 135.98 feet, (78) thence N42° 24' 34"E 148.11 feet to a found rebar with punch mark at the terminus of this survey.

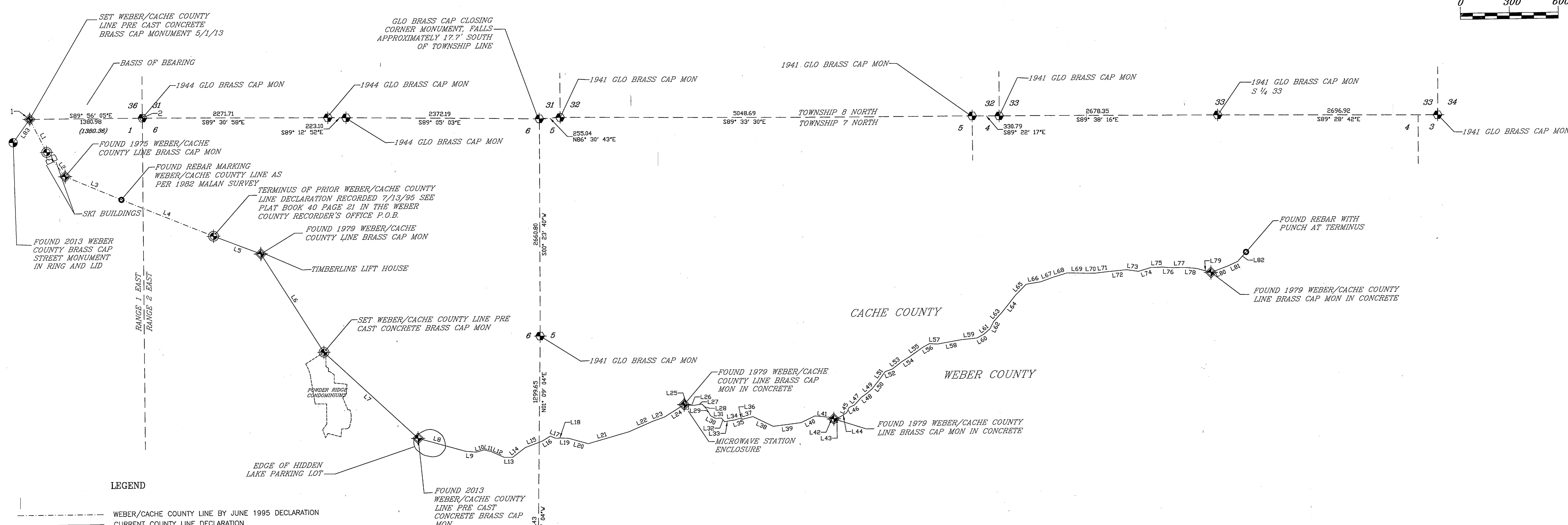
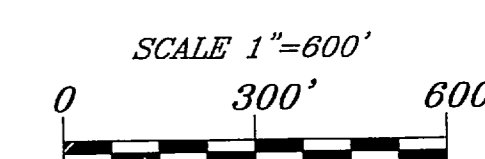
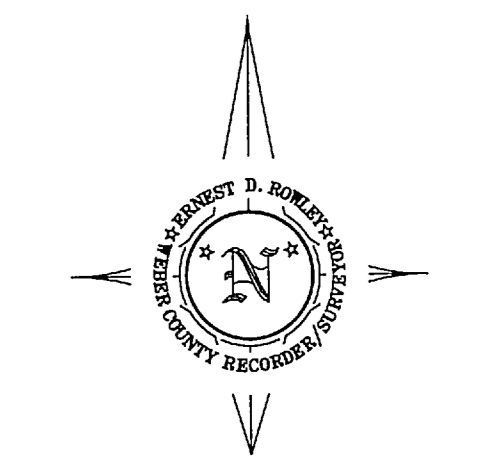


## COUNTY SURVEYORS' CERTIFICATE

This is to certify that under the authority of UCA 17-50-105 we, the Weber County Surveyor and the Cache County Chief Deputy Surveyor, have made a retracement of the common county boundary of a segment of the Weber/Cache County line as described and on file in the office of the Lieutenant Governors Office of the State of Utah. We further certify that this retracement has been executed faithfully and platted to represent said boundary.

ERNEST D. ROWLEY, WEBER COUNTY SURVEYOR  
PRESTON WARD, CACHE COUNTY CHIEF DEPUTY SURVEYOR

WEBER COUNTY RECORDER  
ENTRY NO. 210514010 FEE PAID  
NO FEE FILED FOR RECORD AND  
RECORDED 27-SEP-2013 AT  
02:11 AM IN BOOK 74 OF OFFICIAL  
RECORDS, PAGES 62 to 64. RECORDED  
FOR WEBER COUNTY  
ERNEST ROWLEY  
WEBER COUNTY RECORDER  
BY: Glenn Kilts  
DEPUTY



LEGEND

- WEBER/CACHE COUNTY LINE BY JUNE 1995 DECLARATION
- CURRENT COUNTY LINE DECLARATION
- SECTION LINES
- ⊕ FOUND SECTION CORNER MONUMENT
- ⊕ FOUND COUNTY LINE MONUMENTS
- ⊕ SET COUNTY LINE MONUMENTS
- COUNTY LINE PI, NO MONUMENTS SET AT THESE POINTS
- ⊕ FOUND STREET CENTERLINE MONUMENT

Narrative

The purpose of this plat is to re-construct the common boundary between Weber and Cache Counties. The position of the county line has been determined based on found monumentation as per an unrecorded 1982 survey plot prepared by Fred Malin, past Weber County Surveyor, old survey records, RTK topo data, and differential leveling. The basis of bearing and coordinate system as shown herein is that of NAD'83 Utah North State Plane Grid as derived by static and RTK GPS observations holding Weber County HARN Control System established 2007.

The basis of bearing for this project is S89°56'05"E between the brass cap county line monument at the northwest end of the project (denoted as point #1) and the 1944 GLO brass cap monument at the northwest corner of Township 7 North Range 2 East (denoted as point #2). The bearing and distance given between these two monuments in the July 1995 Declaration of the Weber/Cache County line, recorded as entry #1353604 in the Weber County Recorder's Office, was N89°51'21"E 1381.20'.

The lines for the above referenced July 1995 Declaration of the Weber/Cache County Line were rotated 0°12'39" clockwise holding the above referenced brass cap monument on the northwest end of the project (denoted as point #1).

All distances herein are ground distances, those shown in parenthesis are state plane grid distances. Positions were derived by means of RTK and static GPS observations, with ground distances being calculated using an overall scale factor of 1.000450152 for the entire project.

Coordinates shown in tables are NAD'83 Utah North State Plane grid coordinates. Distances given in tables are ground distances.

Line #	Length	Direction
L1	457.03	S26° 34' 34" E
L2	374.24	S38° 45' 36" E
L3	743.76	S86° 54' 40" E
L4	1214.23	S67° 48' 29" E
L5	618.69	S68° 54' 05" E
L6	1432.62	S32° 02' 40" E
L7	1561.69	S47° 01' 62" E
L8	602.01	S74° 17' 09" E
L9	129.79	S94° 37' 31" E
L10	101.38	N74° 55' 04" E
L11	92.39	S76° 32' 11" E
L12	171.60	S65° 19' 47" E
L13	104.69	N89° 40' 28" E
L14	193.59	N52° 55' 20" E
L15	221.91	N69° 40' 02" E
L16	119.16	N59° 06' 10" E
L17	69.76	S87° 13' 34" E
L18	63.24	N86° 54' 09" E
L19	100.69	S86° 25' 18" E
L20	244.63	S74° 00' 33" E
L21	621.31	N74° 03' 32" E
L22	317.77	N66° 25' 34" E
L23	153.33	N70° 24' 16" E
L24	285.32	N58° 11' 58" E
L25	63.98	S94° 07' 41" E
L26	69.14	S87° 03' 48" E
L27	97.39	N81° 05' 15" E
L28	88.79	S42° 08' 33" E
L29	90.02	S29° 32' 50" E
L30	66.00	S60° 57' 12" E

Line #	Length	Direction
L31	75.89	N89° 45' 03" E
L32	57.25	S40° 33' 09" E
L33	72.99	N79° 41' 06" E
L34	52.82	N82° 58' 29" E
L35	58.58	N72° 17' 43" E
L36	50.93	S82° 52' 42" E
L37	120.54	N75° 58' 36" E
L38	276.76	S63° 46' 19" E
L39	343.76	N82° 55' 27" E
L40	188.03	N84° 52' 01" E
L41	176.04	S83° 46' 54" E
L42	59.60	S70° 03' 03" E
L43	72.74	N73° 41' 58" E
L44	102.28	N59° 12' 35" E
L45	70.59	N25° 41' 03" E
L46	70.31	N86° 02' 50" E
L47	128.35	N42° 53' 59" E
L48	64.47	N54° 47' 39" E
L49	87.14	N49° 51' 14" E
L50	141.88	N38° 46' 07" E
L51	116.00	N38° 53' 00" E
L52	94.64	N70° 56' 36" E
L53	145.13	N52° 44' 19" E
L54	111.75	N59° 59' 58" E
L55	198.69	N55° 28' 01" E
L56	91.96	N81° 38' 32" E
L57	103.70	S87° 11' 13" E
L58	286.76	N80° 38' 00" E
L59	198.43	N84° 30' 21" E
L60	92.81	N61° 36' 04" E

Line #	Length	Direction
L61	103.07	N90° 21' 58" E
L62	101.09	N87° 02' 53" E
L63	153.03	N42° 40' 51" E
L64	282.69	N38° 49' 02" E
L65	190.34	N44° 43' 07" E
L66	190.14	N81° 07' 02" E
L67	172.83	N70° 38' 46" E
L68	185.69	N73° 42' 56" E
L69	241.18	S86° 30' 36" E
L70	108.74	N89° 39' 21" E
L71	170.29	N83° 31' 38" E
L72	215.80	N84° 50' 59" E
L73	144.54	S81° 51' 57" E
L74	160.54	N73° 13' 47" E
L75	152.04	N89° 12' 45" E
L76	125.49	S86° 21' 07" E
L77	141.72	N89° 58' 46" E
L78	141.65	S84° 53' 00" E
L79	183.63	S73° 47' 02" E
L80	218.52	N69° 32' 50" E
L81	135.99	N65° 51' 54" E
L82	148.11	N42° 24' 34" E
L83	349.48	N35° 46' 53" E

DECLARATION OF COUNTY LINE  
COMMON TO WEBER  
AND CACHE COUNTY, UTAH

LOCATED IN SECTION 1, TOWNSHIP 7 NORTH, RANGE 1 EAST, AND SECTIONS 4, 5, 6, TOWNSHIP 7 NORTH, RANGE 2 EAST, SALT LAKE BASE AND MERIDIAN, US SURVEY, WEBER AND CACHE COUNTY, UTAH

Surveyed By  
Trevor Hatch

SURVEY DATE September, 2013

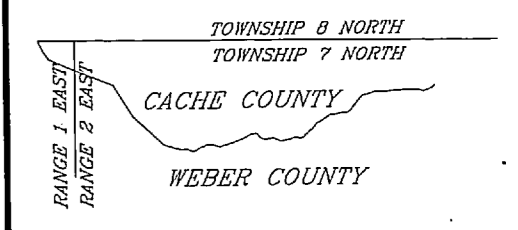
Plat Prepared By  
Larry Slagowski

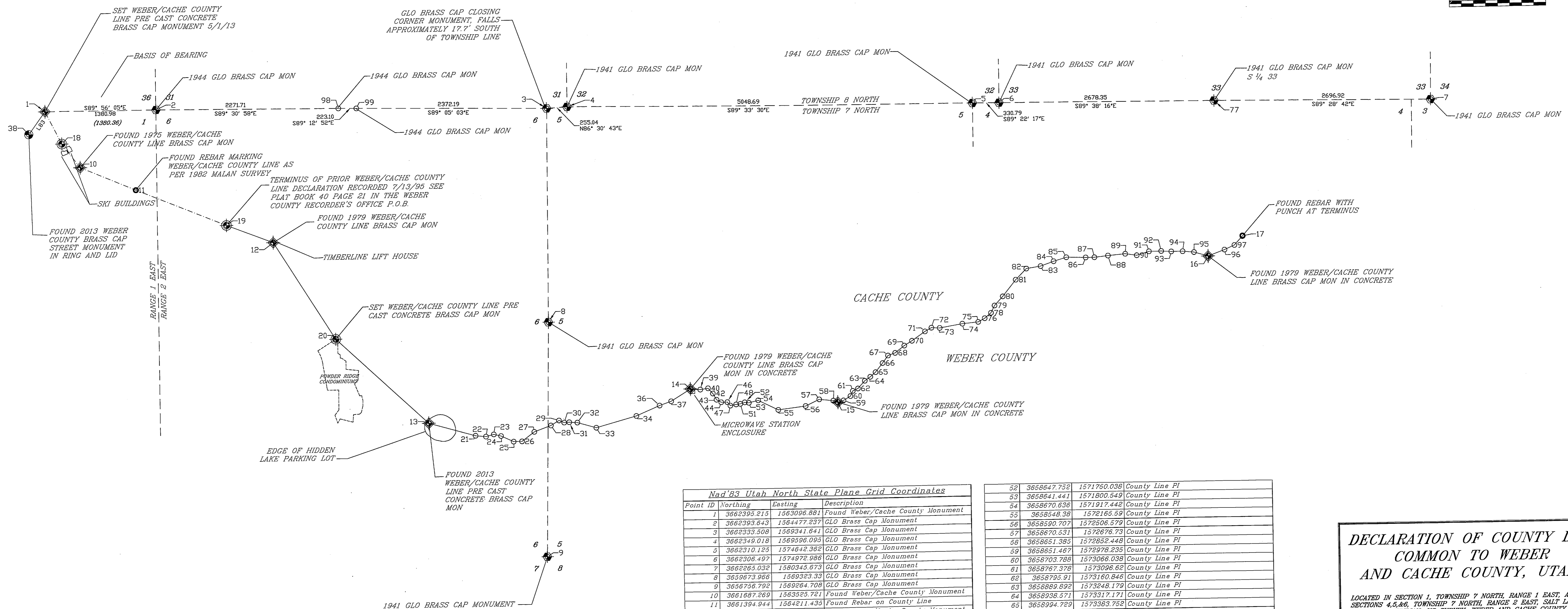
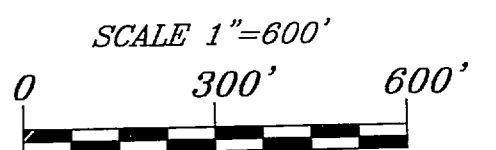
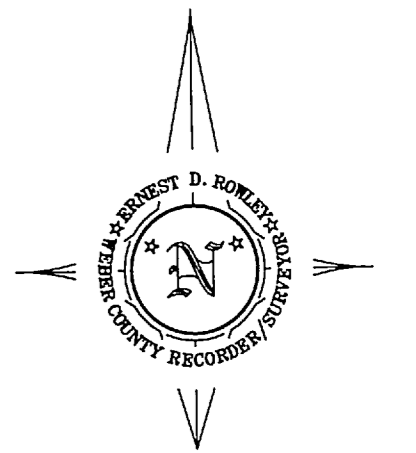
DRAWING DATE September 25, 2013  
Approved for Filing By  
Ernest Rowley  
Weber County Surveyor

APPROVAL DATE SHEET NO. 2 OF 3

SURVEY FILING NUMBER

WEBER COUNTY SURVEY  
Ernest D. Rowley  
Weber County Surveyor  
Larry Slagowski, Chief Deputy  
2390 Washington Blvd. Suite 370  
Ogden, Utah 84401  
(801) 399-8020  
FAX: (801) 399-8316





LEGEND

- WEBER/CACHE COUNTY LINE BY JUNE 1995 DECLARATION
- - - COUNTY LINE DECLARATION
- SECTION LINES
- ⊕ FOUND SECTION CORNER MONUMENT
- ⊕ FOUND COUNTY LINE MONUMENTS
- ⊕ SET COUNTY LINE MONUMENTS
- COUNTY LINE PI, NO MONUMENTS SET AT THESE POINTS
- ⊕ FOUND STREET CENTERLINE MONUMENT

Nad'83 Utah North State Plane Grid Coordinates			
Point ID	Northing	Easting	Description
1	3662395.215	1563096.881	Found Weber/Cache County Monument
2	3662393.643	1564477.237	GLO Brass Cap Monument
3	3662333.508	1569341.641	GLO Brass Cap Monument
4	3662349.018	1569596.095	GLO Brass Cap Monument
5	3662310.125	1574642.362	GLO Brass Cap Monument
6	3662306.497	1574972.968	GLO Brass Cap Monument
7	3662263.032	1580345.073	GLO Brass Cap Monument
8	3659673.966	1569323.333	GLO Brass Cap Monument
9	3656758.792	1569264.708	GLO Brass Cap Monument
10	3661687.289	1563523.721	Found Rebar on County Line
11	3661394.944	1564211.435	Found Weber/Cache County Monument
12	3660713.916	1565912.16	Found Weber/Cache County Monument
13	3658436.015	1567814.288	Found Weber/Cache County Monument
14	3658823.702	1571076.602	Found Weber/Cache County Monument
15	3658631.038	1572908.449	Found Weber/Cache County Monument
16	3660363.16	1577348.687	Found Weber/Cache County Monument
17	3660604.384	1577973.195	Found Rebar on County Line
18	3661986.956	1563301.652	County Line PI
19	3660936.324	1565335.213	County Line PI
20	3659300.118	1566871.924	County Line PI
21	3658273.042	1568333.534	County Line PI
22	3658260.89	1568328.692	County Line PI
23	3658287.258	1568220.537	County Line PI
24	3658263.757	1568710.349	County Line PI
25	3658194.183	1568866.213	County Line PI
26	3658194.736	1568870.816	County Line PI
27	3658311.426	1569125.331	County Line PI
28	3658368.591	1569333.224	County Line PI
29	3658449.148	1569434.57	County Line PI
30	3658422.156	1569498.884	County Line PI
31	3658423.572	1569561.973	County Line PI
32	3658319.293	1569662.43	County Line PI
33	3658351.873	1569807.685	County Line PI
34	3658494.986	1570398.722	County Line PI
35	3658622.016	1570689.848	County Line PI
36	3658622.016	1570834.227	County Line PI
37	3658673.412	1562892.63	Street Centerline Monument
38	3662111.822	1571199.297	County Line PI
39	3659829.729	1571293.465	County Line PI
40	3659829.729	1571354.973	County Line PI
41	3659685.604	1571399.348	County Line PI
42	3659685.604	1571457.017	County Line PI
43	3659685.604	1571457.017	County Line PI
44	3659685.604	1571457.017	County Line PI
45	3659685.604	1571457.017	County Line PI
46	3659685.604	1571457.017	County Line PI
47	3659685.604	1571457.017	County Line PI
48	3659685.604	1571457.017	County Line PI
49	3659685.604	1571457.017	County Line PI
50	3659685.604	1571457.017	County Line PI
51	3658629.943	1571694.257	County Line PI

52	3658647.752	1571750.038	County Line PI
53	3658641.441	1571800.549	County Line PI
54	3658670.636	1571917.442	County Line PI
55	3658548.38	1572165.59	County Line PI
56	3658590.707	1572506.579	County Line PI
57	3658670.531	1572676.79	County Line PI
58	3658651.385	1572852.448	County Line PI
59	3658651.467	1572978.235	County Line PI
60	3658703.788	1573066.038	County Line PI
61	3658767.378	1573096.62	County Line PI
62	3658793.91	1573160.848	County Line PI
63	3658889.892	1573248.179	County Line PI
64	3658936.571	1573317.171	County Line PI
65	3658994.729	1573363.752	County Line PI
66	3659105.231	1573472.604	County Line PI
67	3659197.971	1573542.193	County Line PI
68	3659226.826	1573631.515	County Line PI
69	3659316.654	1573746.987	County Line PI
70	3659374.186	1573842.714	County Line PI
71	3659486.784	1574006.351	County Line PI
72	3659530.427	1574067.207	County Line PI
73	3659525.34	1574190.738	County Line PI
74	3659571.99	1574473.552	County Line PI
75	3659590.98	1574670.984	County Line PI
76	3659635.148	1574752.875	County Line PI
77	3662289.574	1577650.078	GLO Brass Cap Monument
78	3659700.666	1574832.017	County Line PI
79	3659790.863	1574877.968	County Line PI
80	3659903.042	1574981.959	County Line PI
81	3660107.623	1575146.548	County Line PI
82	3660242.611	1575280.418	County Line PI
83	3660270.615	1575458.317	County Line PI
84	3660327.855	1575621.306	County Line PI
85	3660374.304	1575790.274	County Line PI
86	3660368.035	1576021.264	County Line PI
87	3660368.888	1576129.952	County Line PI
88	3660367.581	1576299.11	County Line PI
89	3660406.944	1576513.943	County Line PI
90	3660396.502	1576656.963	County Line PI
91	3660432.803	1576810.608	County Line PI
92	3660434.892	1576962.57	County Line PI
93	3660426.911	1577087.748	County Line PI
94	3660427.044	1577229.405	County Line PI
95	3660414.417	1577370.423	County Line PI
96	3660439.483	157751.314	County Line PI
97	3660495.037	1577875.348	County Line PI
98	3662374.486	1566747.046	GLO Brass Cap Monument
99	3662371.409	1566970.823	GLO Brass Cap Monument

**DECLARATION OF COUNTY LINE  
COMMON TO WEBER  
AND CACHE COUNTY, UTAH**

LOCATED IN SECTION 1, TOWNSHIP 7 NORTH, RANGE 1 EAST, AND  
SECTIONS 4, 5, 6, TOWNSHIP 7 NORTH, RANGE 2 EAST, SALT LAKE  
BASE AND MERIDIAN, US SURVEY, WEBER AND CACHE COUNTY, UTAH

Surveyed By  
Trevor Hatch

SURVEY DATE September, 2013

Plot Prepared By  
Larry Stogowski

DRAWING DATE September 25, 2013

Approved for Filing By  
Ernest Rowley  
Weber County Surveyor

APPROVAL DATE SHEET NO. 3 OF 3

SURVEY FILING NUMBER

**WEBER COUNTY  
SURVEY**  
Ernest D. Rowley  
Weber County Surveyor  
Larry Stogowski, Chief Deputy  
2380 Washington Blvd. Suite 370  
Ogden, Utah 84401  
(801) 369-8020  
FAX (801) 369-8316

TOWNSHIP 7 NORTH  
RANGE 1 EAST  
RANGE 2 EAST  
WEBER COUNTY  
CACHE COUNTY

74-64